



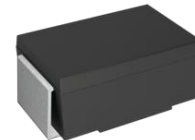
SSCSSS52DAF THRU SSCSSS520DAF

Schottky Barrier Diode

● Features

- ✧ Reverse Voltage - 20 to 200 V
- ✧ Forward Current - 5.0A
- ✧ Low profile package
- ✧ Ideal for automated placement
- ✧ Ultrafast reverse recovery time
- ✧ Low power losses, high efficiency
- ✧ Low forward voltage
- ✧ High surge capability
- ✧ UL Flammability Classification Rating 94V-0
- ✧ High temperature soldering: 260°C/10 seconds at terminals

● PIN configuration



SMAF



Circuit Diagram



Marking

(SS54:SSCSSS54DAF Marking Code)

● Applications

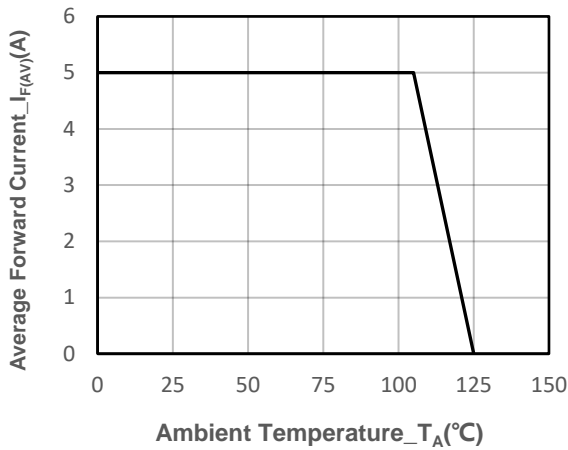
- ✧ Low Voltage
- ✧ High-Frequency Inverters
- ✧ Free Wheeling
- ✧ Polarity Protection

● Absolute maximum rating @T_A=25°C

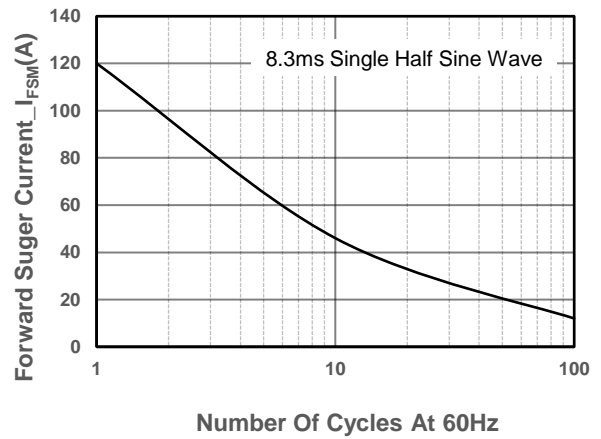
Parameter	Symbol	SSCSSS						Unit
		52DAF	54DAF	56DAF	510DAF	515DAF	520DAF	
Maximum Peak Repetitive Peak Reverse Voltage	V _{RRM}	20	40	60	100	150	200	V
Maximum RMS Voltage	V _{RMS}	14	28	42	70	105	140	V
Maximum DC Blocking Voltage	V _{DC}	20	40	60	100	150	200	V
Maximum Average Forward Rectified Current	I _{F(AV)}	5.0						A
Non-repetitive Peak Forward Surge Current @t=8.3ms	I _{FSM}	120.0						A
Max Instantaneous Forward Voltage at 3 A	V _F	0.55	0.55	0.70	0.85	0.95	0.95	V
Maximum DC Reverse Current T _a = 25 °C at Rated DC Blocking Voltage T _a = 100 °C	I _R	0.2			0.05			mA
		20			5			
Operating Temperature	T _J	-55 ~ +150						°C
Storage Temperature	T _{STG}	-55 ~ +150						°C



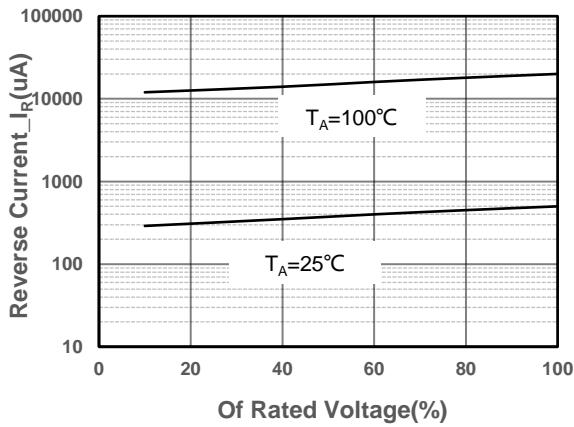
● Typical Performance Characteristics



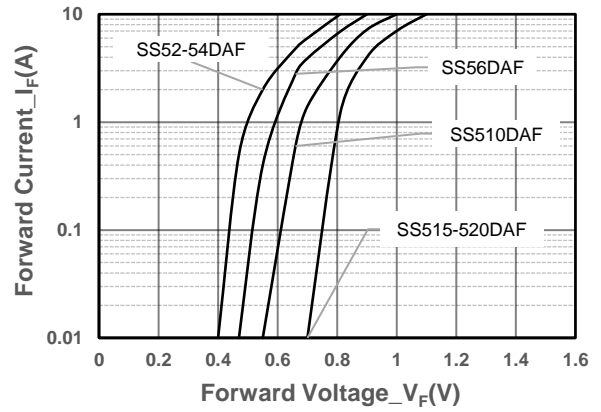
I_o -TL Curve



Surge Forward Current Capability Voltage



Typical Reverse Characteristics



Forward Voltage vs. Forward Current



● Package Information

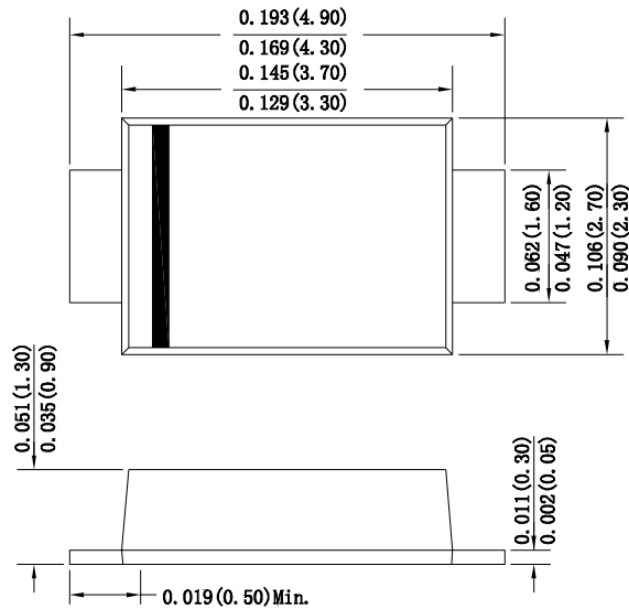
Ordering Information

Device	Package	Marking	Qty per Reel	Reel diameters
SSCSS52DAF	SMAF	SS52	3000	7inch
SSCSS54DAF	SMAF	SS54	3000	7inch
SSCSS56DAF	SMAF	SS56	3000	7inch
SSCSS510DAF	SMAF	SS510	3000	7inch
SSCSS515DAF	SMAF </td <td>SS515</td> <td>3000</td> <td>7inch</td>	SS515	3000	7inch
SSCSS520DAF	SMAF	SS520	3000	7inch

Mechanical Data

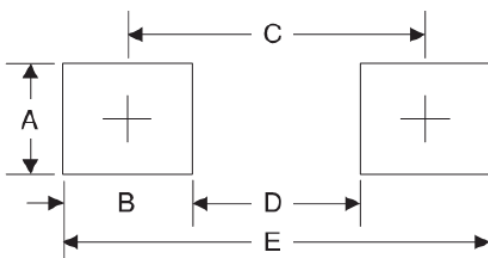
Case: SMAF

Case Material: Molded Plastic. UL Flammability



Dimensions in inches and (millimeters)

Recommended Pad outline



Symbol	Unit (mm)	Unit (inch)
A	1.68	0.066
B	1.52	0.060
C	3.90	0.154
D	2.00	0.078
E	5.10	0.200



DISCLAIMER

AFSEMI RESERVES THE RIGHT TO MAKE CHANGES WITHOUT FURTHER NOTICE TO ANY PRODUCTS HEREIN TO IMPROVE RELIABILITY, FUNCTION OR DESIGN. AFSEMI DOES NOT ASSUME ANY LIABILITY ARISING OUT OF THE APPLICATION OR USE OF ANY PRODUCT OR CIRCUIT DESCRIBED HEREIN; NEITHER DOES IT CONVEY ANY LICIENCE UNDER ITS PATENT RIGHTS, NOR THE RIGHTS OF OTHERS.

THE GRAPHS PROVIDED IN THIS DOCUMENT ARE STATISTICAL SUMMARIES BASED ON A LIMITED NUMBER OF SAMPLES AND ARE PROVIDED FOR INFORMATIONAL PURPOSE ONLY. THE PERFORMANCE CHARACTERISTICS LISTED IN THEM ARE NOT TESTED OR GUARANTEED. IN SOME GRAPHS, THE DATA PRESENTED MAY BE OUTSIDE THE SPECIFIED OPERATING RANGE (E.G., OUTSIDE SPECIFIED POWER SUPPLY RANGE) AND THEREFORE OUTSIDE THE WARRANTED RANGE.